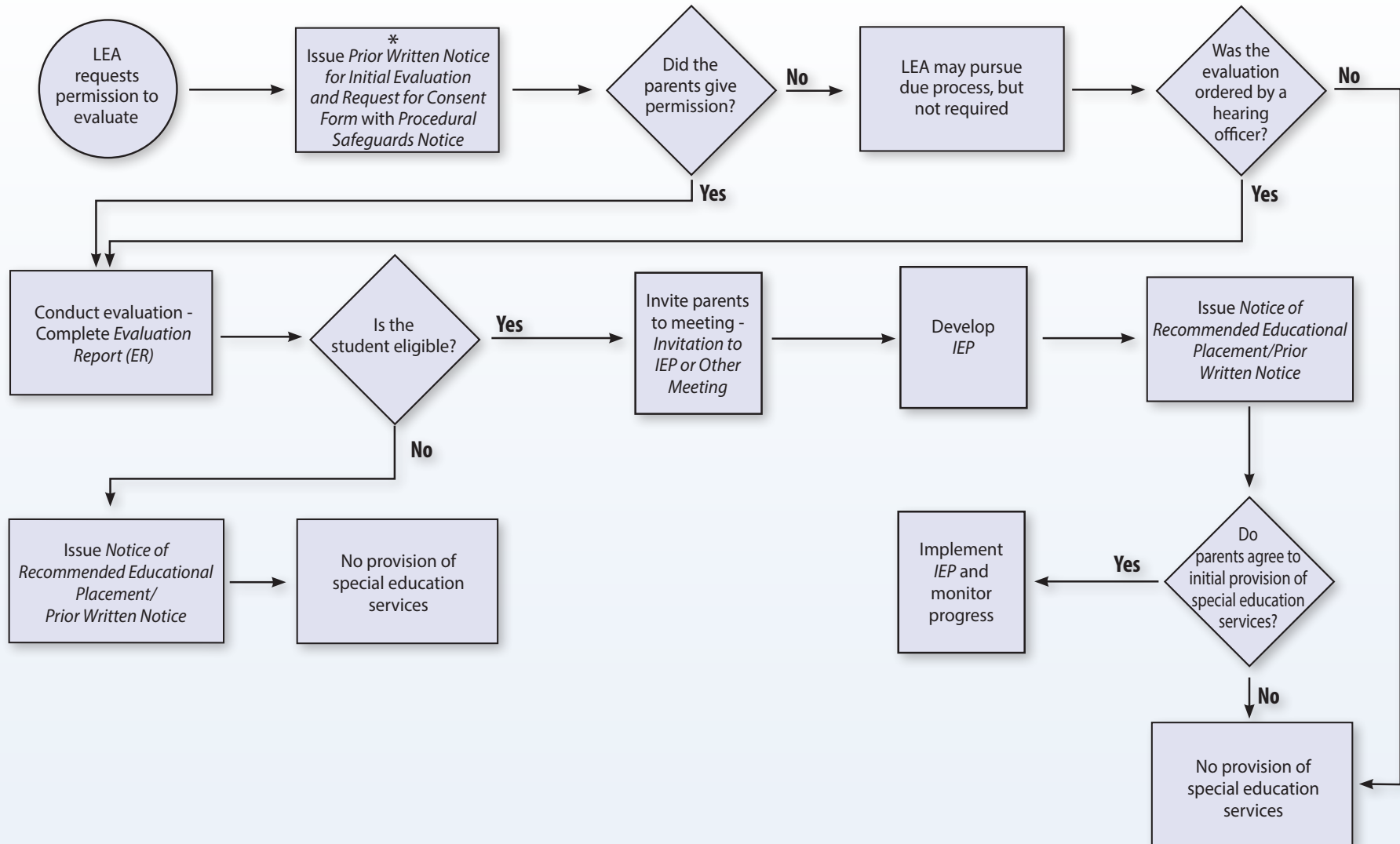


# The Special Education Evaluation/IEP Process



This flowchart shows the basic steps to be followed and the decisions to be made by local educational agencies (LEAs) to meet the requirements for evaluation and development of *Individualized Education Programs (IEPs)* for students with disabilities **when the request is initiated by the LEA**. It is not meant to replace the IDEA or Chapters 14 and 711 of the Pennsylvania Regulations. For more detailed information about the evaluation process, refer to the annotated *Evaluation Report*, available at [www.pattan.net](http://www.pattan.net).



# The Special Education Evaluation/IEP Process



This flowchart shows the basic steps to be followed and the decisions to be made by local educational agencies (LEAs) to meet the requirements for evaluation and development of *Individualized Education Programs (IEPs)* for students with disabilities **when the request is made by the parent(s)**. It is not meant to replace the IDEA or Chapters 14 and 711 of the Pennsylvania Regulations. For more detailed information about the evaluation process, refer to the annotated *Evaluation Report*, available at [www.pattan.net](http://www.pattan.net).

